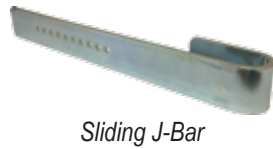
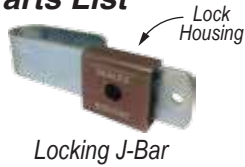


Installation Guide for MS-BAR20 & MS-BAR21

Parts List

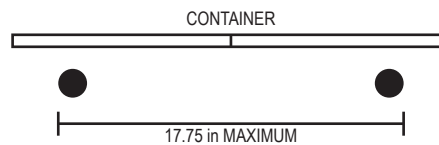


Step 1

Remove the Locking Pin, which is temporarily taped in place on the bar.

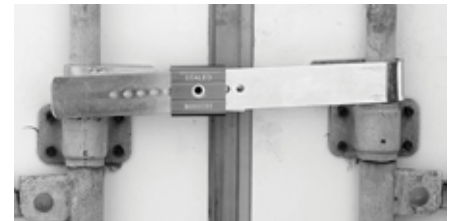
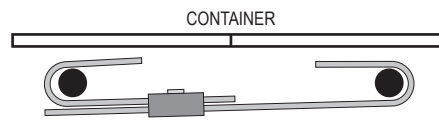
Step 2

Position the Locking J-Bar around the left rod with lock facing out. Fits containers with rod spacing of 17.75 inch maximum (12.5 inch minimum).



Step 2

Insert the Sliding Bar into the lock housing, making sure to also position the Sliding J-Bar around the right rod.

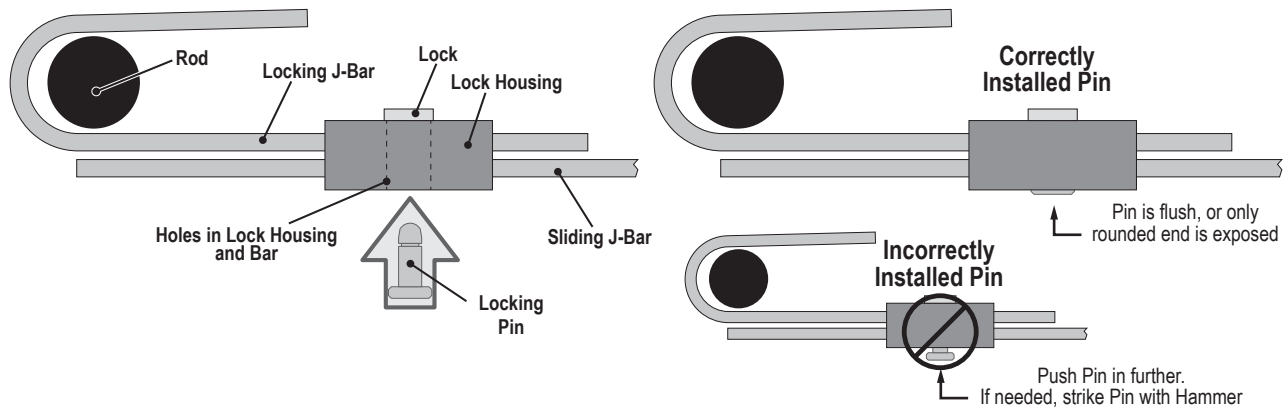


Step 3

Tighten the Sliding Bar as much as possible and align the nearest hole over the Lock. Manually press the Locking Pin into Lock. See Diagram below for proper orientations.

When locked properly, the Pin will be flush with the Lock Housing as illustrated below. Usually the Pin can be installed manually with no tools.

However, if the Pin is not flush, use a hammer to strike the pin until it is fully engaged and flush with the Lock Housing.



The MS-BAR20 is now installed, if you are installing MS-BAR21, see other side.

www.novavisioninc.com

Installation Guide for MS-BAR20 & MS-BAR21

Step 4

Loop Cable Seal around the J-Bar, Door Latch and back through its housing to lock.



Step 5

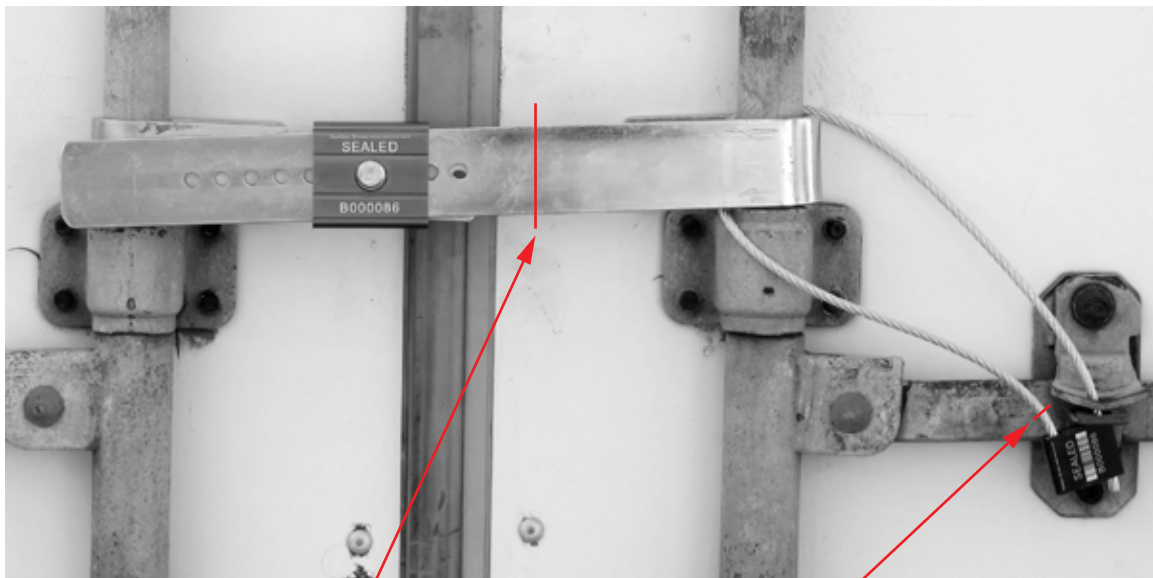
Pull cable tight to remove slack. Cut any excess cable to prevent re-use.



CUT

The MS-BAR21 is now installed.

Removal Guide for MS-BAR20 & MS-BAR21



Cut Sliding J-Bar here with Angle Grinder

Cut here with Wire Cutters